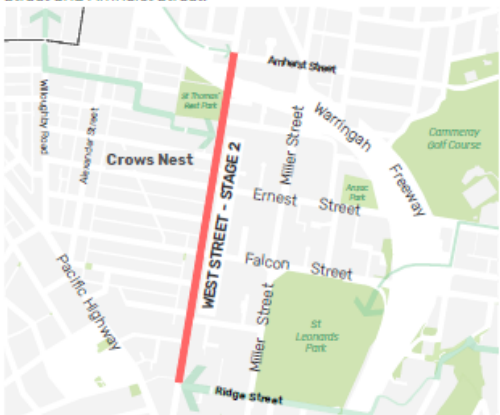


PROJECT OVERVIEW

North Sydney Council is committed to providing safe and healthy transport options to improve our streets and make them easier to walk and cycle. Council is seeking feedback on the proposed upgrades on West Street, between Riddge Street and Amherst Street.



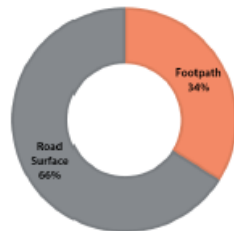
Context Plan: West Street extent of works

PROPOSED IMPROVEMENTS

- Separated bike path from Ridge St to Amherst St
- Shared user path at Amherst St and West St.
- Public domain improvements and expanded outdoor dining opportunities on West St at the Carlow St and Emmett St intersections.
- Traffic calming to lower vehicle speeds
- New crossing points at Myrtle St, Emmett St, Carlow St, Hayberry St, Burlington St, Rosalind St, Metcalfe St, and Amherst St.
- Roundabout upgrade at Amherst St.
- Improved connections to local bike routes.
- Improved pedestrian amenity with new crossing points and shared intersection treatments.
- Improvement to existing verges and streetscape with 29 additional street trees and garden beds throughout West St to improve street amenity.
- Net loss of 2 car spaces along the project area.
- Pavement and pram ramp upgrades for improved access at Falcon St and Ernest St.

WEST STREET SPACE ALLOCATION

Space allocation - Existing



Space allocation - Proposed



Tree Coverage



LOSS	GAIN	TOTAL
-1	+30	+29

Parking



LOSS	GAIN	TOTAL
-17	+15	-2

FURTHER INFORMATION

scan the QR code or visit Council's website for further information:
yoursay.northsydney.nsw.gov.au/west-street-stage-2

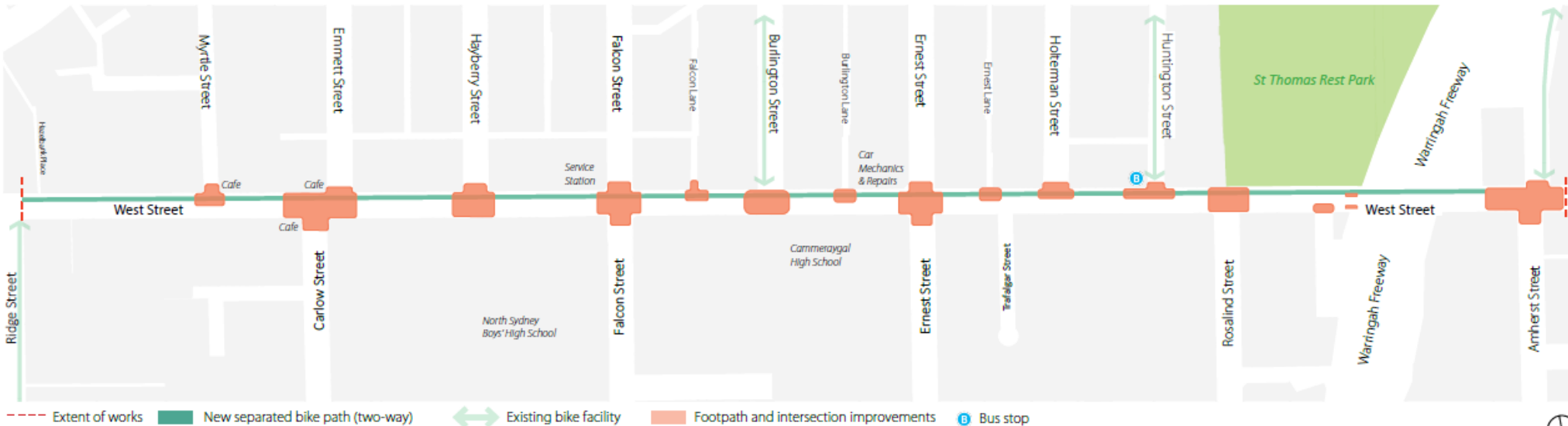


HAVE YOUR SAY!

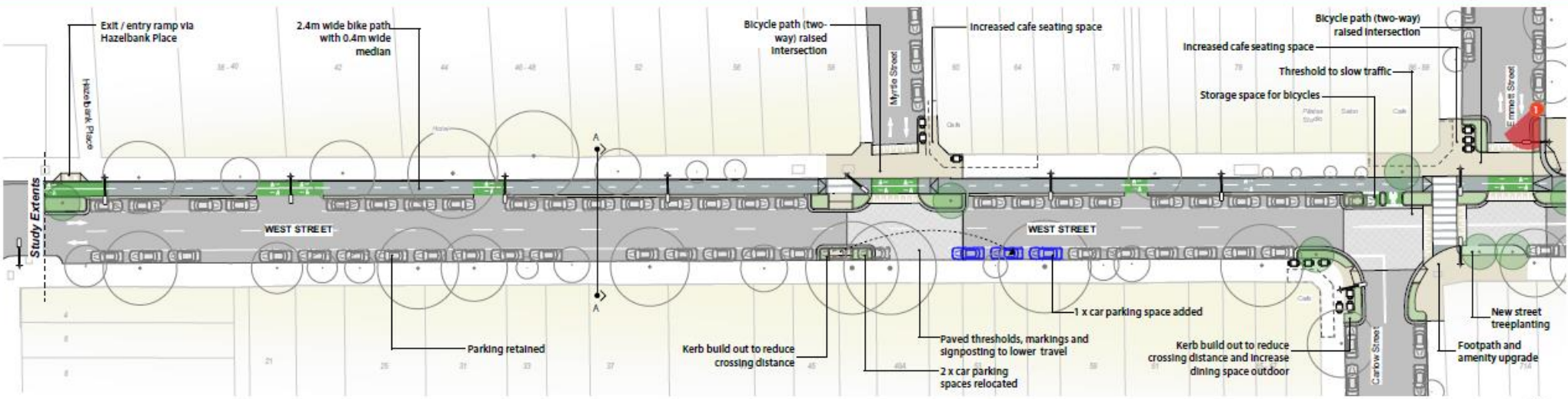
Email: YourSay@northsydney.nsw.gov.au

Postal: North Sydney Council,
PO BOX 12, North Sydney,
NSW2059

Feedback closes 3 March 2024



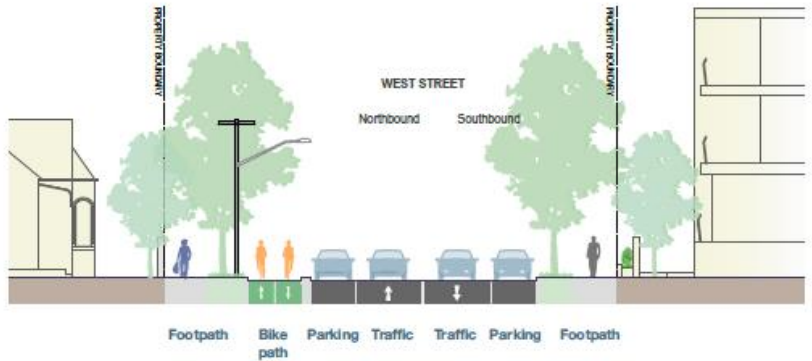
Overview Plan: West Street Concept Design - Proposed bike path alignment, pedestrian Improvements and traffic calming



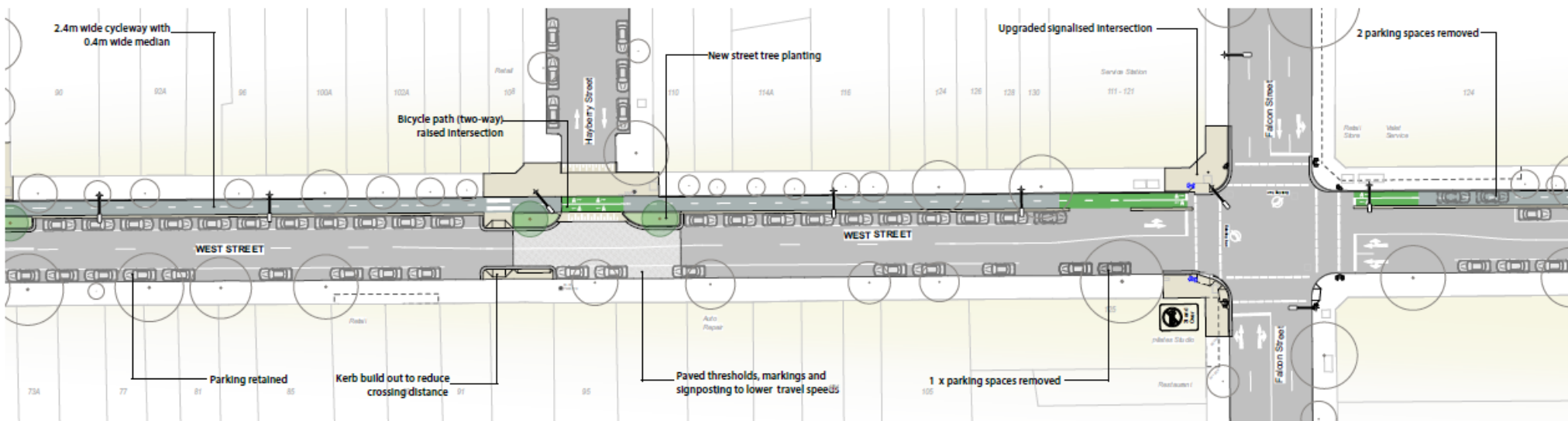
Plan 1: Ridge Street to Emmett St



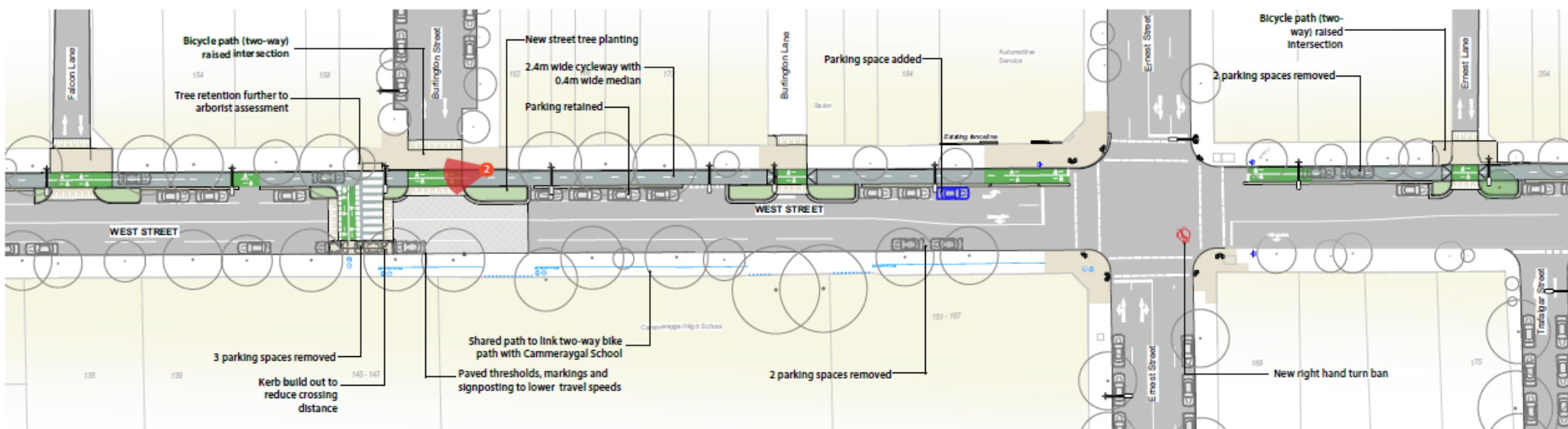
1. Artist's impression: West St / Emmett St intersection



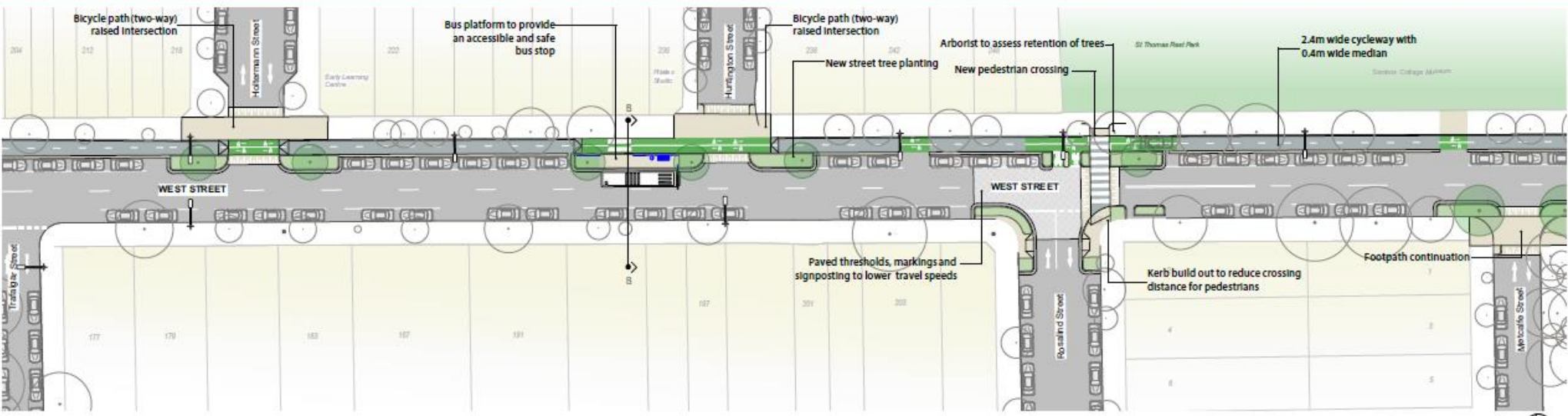
Typical Section A: Two-way bike path with parking and general traffic



Plan 2: Emmett St to Falcon St



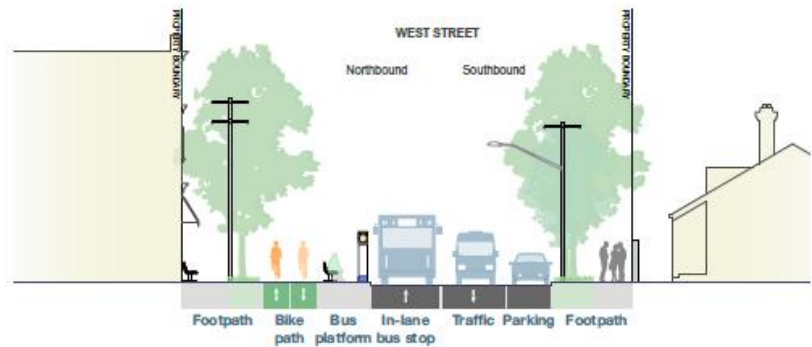
Plan 3: Falcon Lane to Trafalgar St



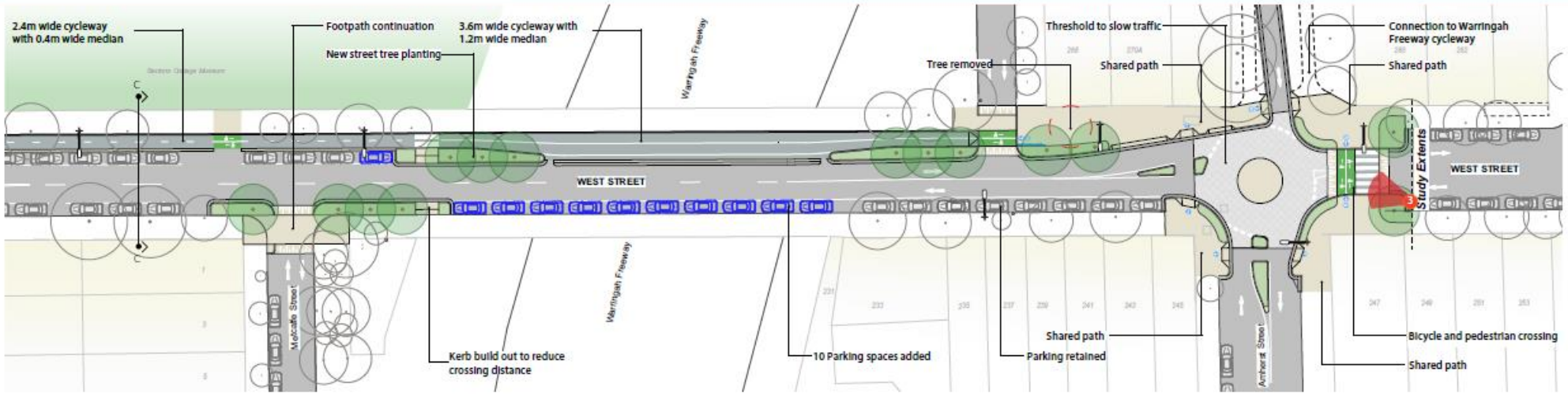
Plan 4: Trafalgar St to Metcalfe St



2. Artist's impression: West St / Burlington St intersection



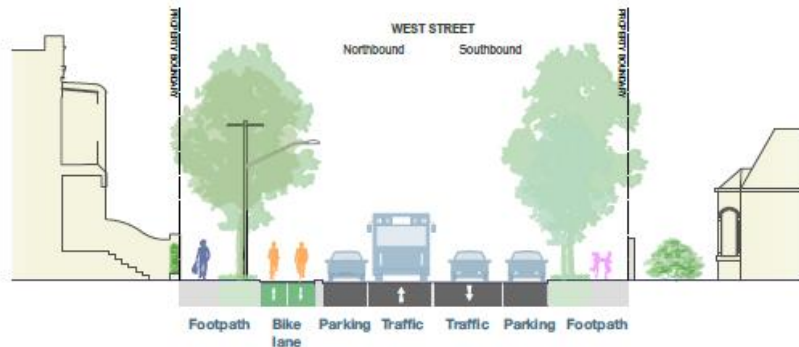
Typical Section B: Two-way bike path with in-lane bus stop and bus platform



Plan 5: Metcalfe St to Amherst St



3. Artist's impression: West St / Amherst St intersection



Typical Section C: Two-way bike path along bus route