

# **YOUNG STREET PLAZA UPGRADE**

**Concept Design Report - Community Consultation**





---

# CONTENTS

POP UP PLAZA	3
CONCEPT PLAN	4
MONTAGES	5-8
MATERIALS PALETTE	9-10
PLANTING PALLETTE	11-12
PRECEDENTS	13-14
ACTIVATION	15
SHELTER AND CANOPY COVER	16
LEVELS AND GRADING	17
PEDESTRIAN MOVEMENTS	18
VEHICULAR MOVEMENTS	19
SWEPT PATHS	20



# POP UP PLAZA



THE POP-UP PLAZA WAS DESIGNED AND INSTALLED AS A TEMPORARY TRIAL SPACE



**KEY TAKEAWAYS FROM THE COMMUNITY CONSULTATION:**

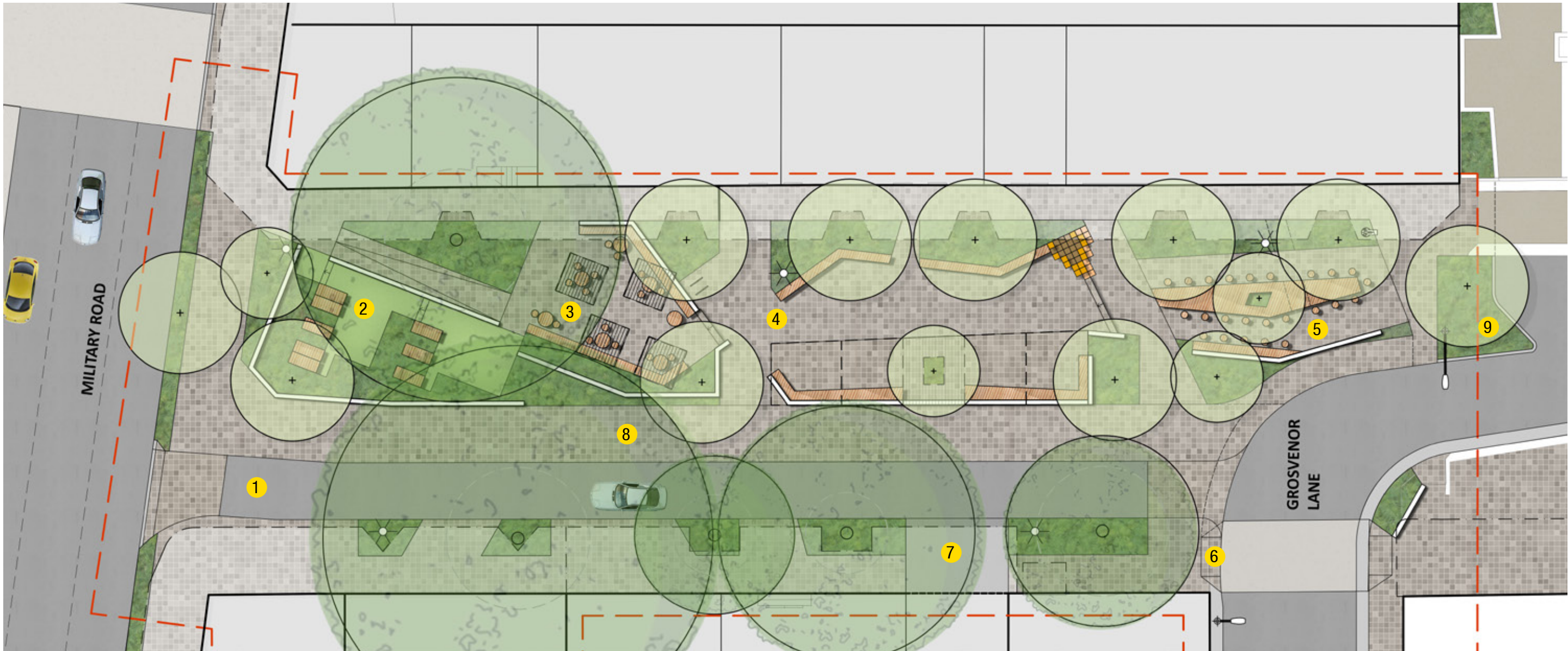
There were approximately 240 responses received to the online survey - 63% Support, 29% Oppose, 8% Neither support/oppose.

- Key items to be considered for inclusion:
- Add more amenities for kids, make more child friendly.
  - Use 'upmarket' materials.
  - Incorporate some shade/shelter elements
  - Ensure Military Road is blocked off/not easily accessible to children.
  - Create more of a 'piazza' style rather than bright 'funky' design.
  - Design should be befitting café society/ bar culture that suits the suburb.
  - Consider weather protection/shelter.
  - Consider a noise barrier to Military Road.
  - Increase the artificial turf area.
  - Include games/kids activities like in the Newport Arms like Jenga o bowling lane
  - Include more seating space with tables.
  - Extend the feature lighting concept from Grosvernor lane.
  - Ensure there is some 'green space'.
  - Provide access for a food truck
  - Find the balance between a café style plaza and child-friendly open space





# CONCEPT PLAN



- 1** One way car lane 2.8 metre width. Threshold paving at either end.

**2** Tiered lounging seating under shade of trees well defined by walling and planting to create adequate buffer to Military Rd while responding to existing levels. Opportunity to use walling for signage.

**3** Cafe style seating area anchored by existing tree and enclosed in planting. Opportunity for smart furniture and umbrellas - fixed.
- 4** Seating Zone - various types of seating from lounging decks to conventional seats with portions of space under shelter to maximise use in all weather. Opportunity within the space for contained urban play element ( uneven steps blocks align with level change/ step.

**5** The Communal "long lunch" area - features communal tables at two levels for high and lower seating options defined by canopy trees, planting and walling.
- 6** Eastern side of Young St maintained as pedestrian thoroughfare with existing trees retained and increased planting at ground level. Eastern kerbline

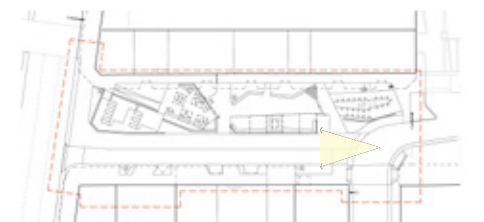
**7** Existing drive to 3 Young Street to remain

**8** Temporary pedestrian path to accommodate future bike path, pending concept design and community consultation
- 9** Plaza kerb alignment to reinforce Left turn only from Grosvenor Lane into Young street - this is being proposed to address pedestrians safety in Grosvenor lane shared zone





# MONTAGE 1 - NORTH STREET VIEW



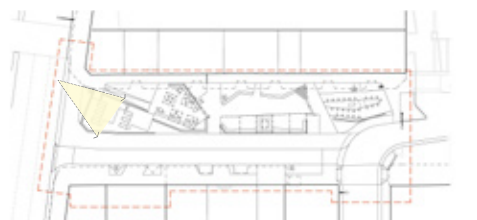


# MONTAGE 2 - SOUTH STREET VIEW



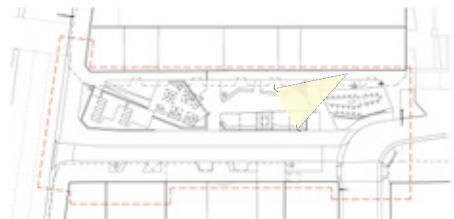


# MONTAGE 3 - SOUTH PLAZA VIEW





# MONTAGE 4 - NORTH PLAZA VIEW





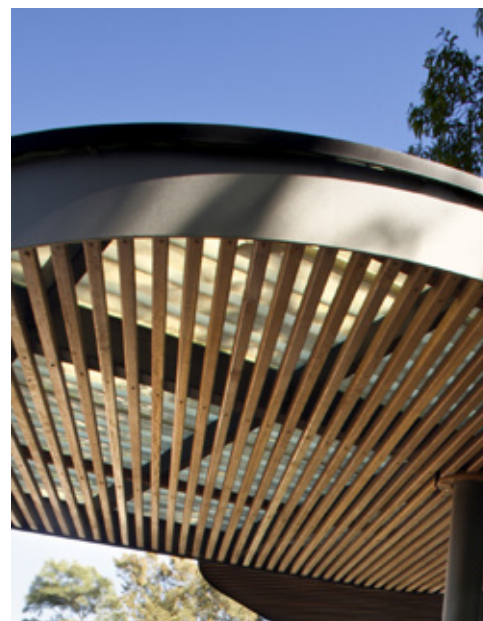
# MATERIALS PALETTE



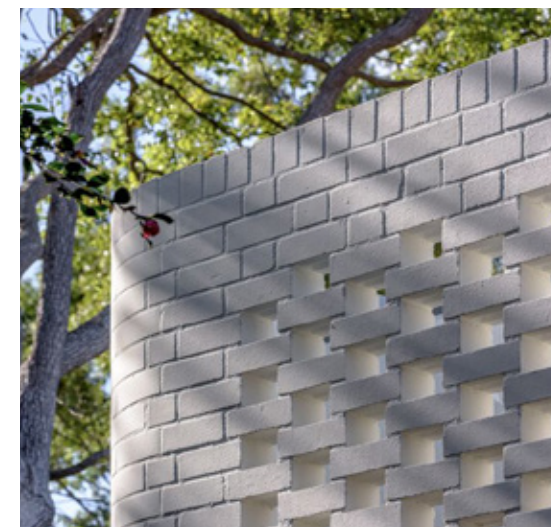
## Built Elements



Young Street Plaza  
For: North Sydney Council



## Walling



## Seating



## Key Considerations

### BUILT FORM

- Creates a sense of human scale and more intimate spaces
- Offers weather protection
- Differentiates spaces
- Provides a horizontal layering effect to the plaza

### WALLING

- Creates separation between vehicular and pedestrian spaces
- Provides a sense of safety
- Helps articulate and define spaces
- Can vary in height to reduce vehicular noise
- Can be utilised for signage and placemaking

### SEATING

- Allow for a variety of seating to support both outdoor dining and lounging areas
- Consider style of seating for each zone which looks cohesive as a whole while defining each zone
- Ensure seating is robust, fit for purpose attractive
- Consider future maintenance and materiality



# MATERIALS PALETTE



## Surface Finishes



## Feature Lighting



## Key Considerations

### PAVER

Use of dark main body paver for plaza to achieve a seamless transition from surrounding streets

Dark colour is more appropriate within areas where food will be consumed - less staining

Dark paver provides contrast with other key materials

Dark paver - proven "fit for purpose"

### ARTIFICIAL TURF

Confined to play area

Provides a sense of "green"

Positive endorsement from community

Located under shade of existing tree to reduce heat load

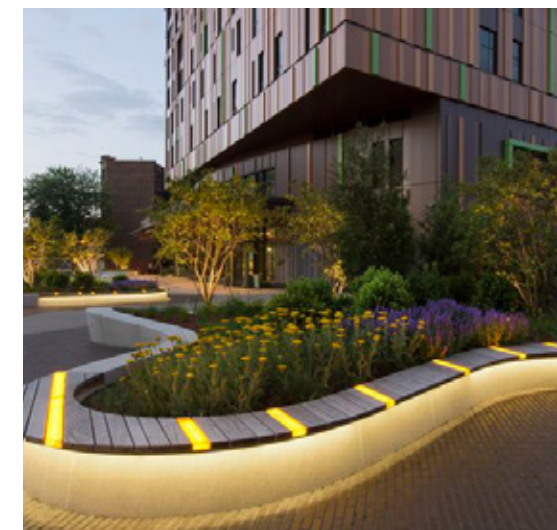
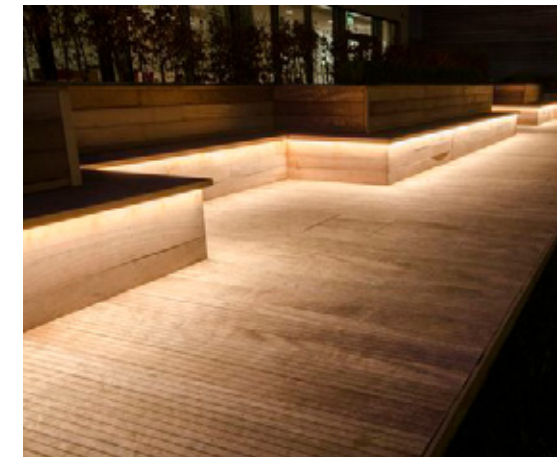
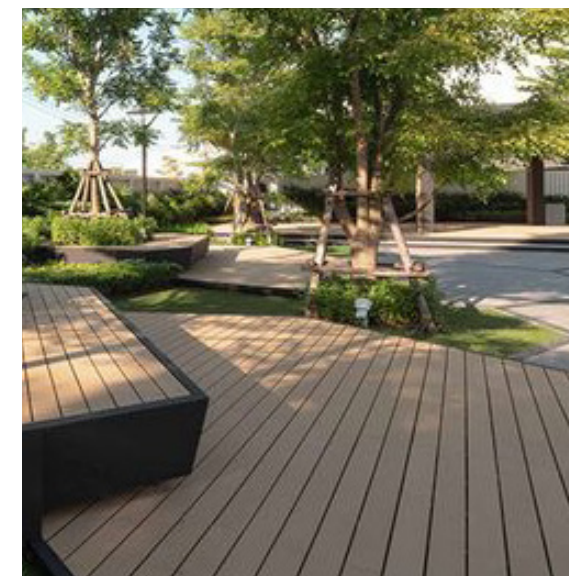
Contextually looks more appropriate than rubber softfall

### LIGHTING

Allow for more pedestrian scale lighting to space

Opportunity to overlay feature lighting to walls/seating

Opportunity for cantenary lighting across the space





# PLANTING PALETTE



## Trees



## Key Considerations

### TREES

- Build upon existing canopy cover, selecting tree species to complement existing trees.
- Utilise existing awning cut-outs to add in trees
- Locate trees to define movement and where additional canopy cover is required
- Plant trees in semi mature sizes for immediate visual impact
- Select clean trunk trees for visibility and CPTED, reducing eye height hazards to pedestrians
- Create a layering effect at height by using both smaller and larger tree species
- Provide a sense of overhead “green”
- Allow for seasonal change with deciduous and flowering tree types included
- Contribute to NSC’s canopy cover targets
- Ensure the space offers summer shade and winter sun

CODE	BOTANICAL NAME	COMMON NAME
T1	<i>Platanus orientalis</i> 'Digitata'	Plane Tree
T2	<i>Pyrus ussuriensis</i>	Manchurian Pear
T3	<i>Lagerstroemia indica</i> 'Natchez'	White Crepe Myrtle
T4	<i>Flindersia australis</i>	Crows Ash



# PLANTING PALETTE



## Groundlayer planting



CODE	PLANTING STYLE	LOCATION
P1	Planting at grade	To edges of the plaza, particularly under existing and new trees and to Military Road
P2	Raised planters	Used to define spaces within the plaza and accommodate level changes
P3	Large pots	Scattered throughout the plaza, clustered in groups to provide "living colour" seasonal displays

## Key Considerations

### GROUNDLAYER PLANTING

Create interest and diversity with mixed planting which provides seasonal colour and texture

Utilise a mix of native and exotic planting which is hardy and drought tolerant

Ensure planting heights respond to CPTED guidelines

Consider long term maintenance

### POTS

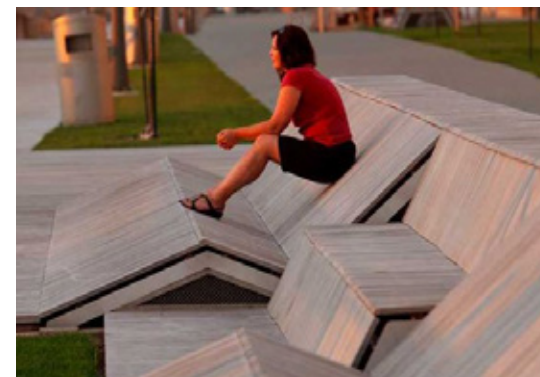
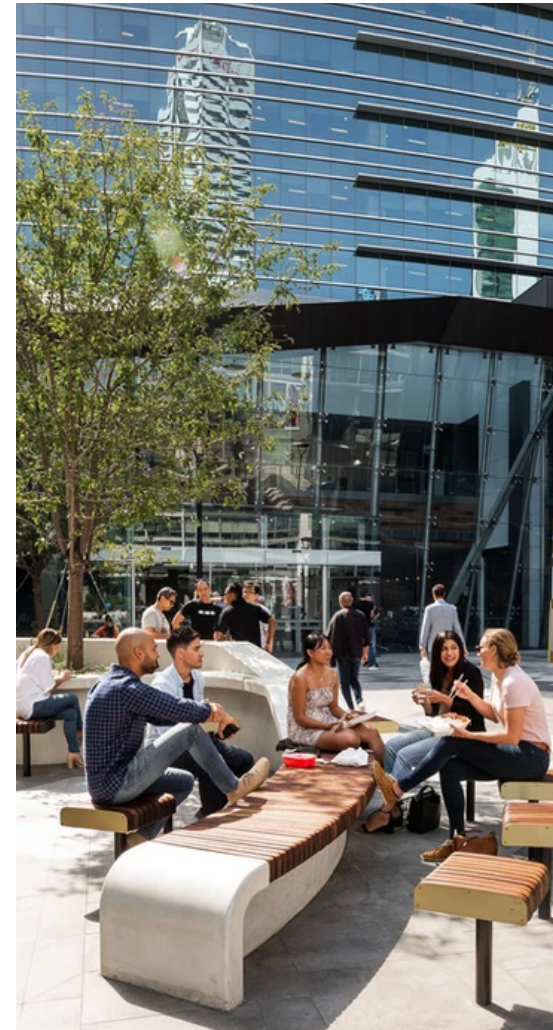
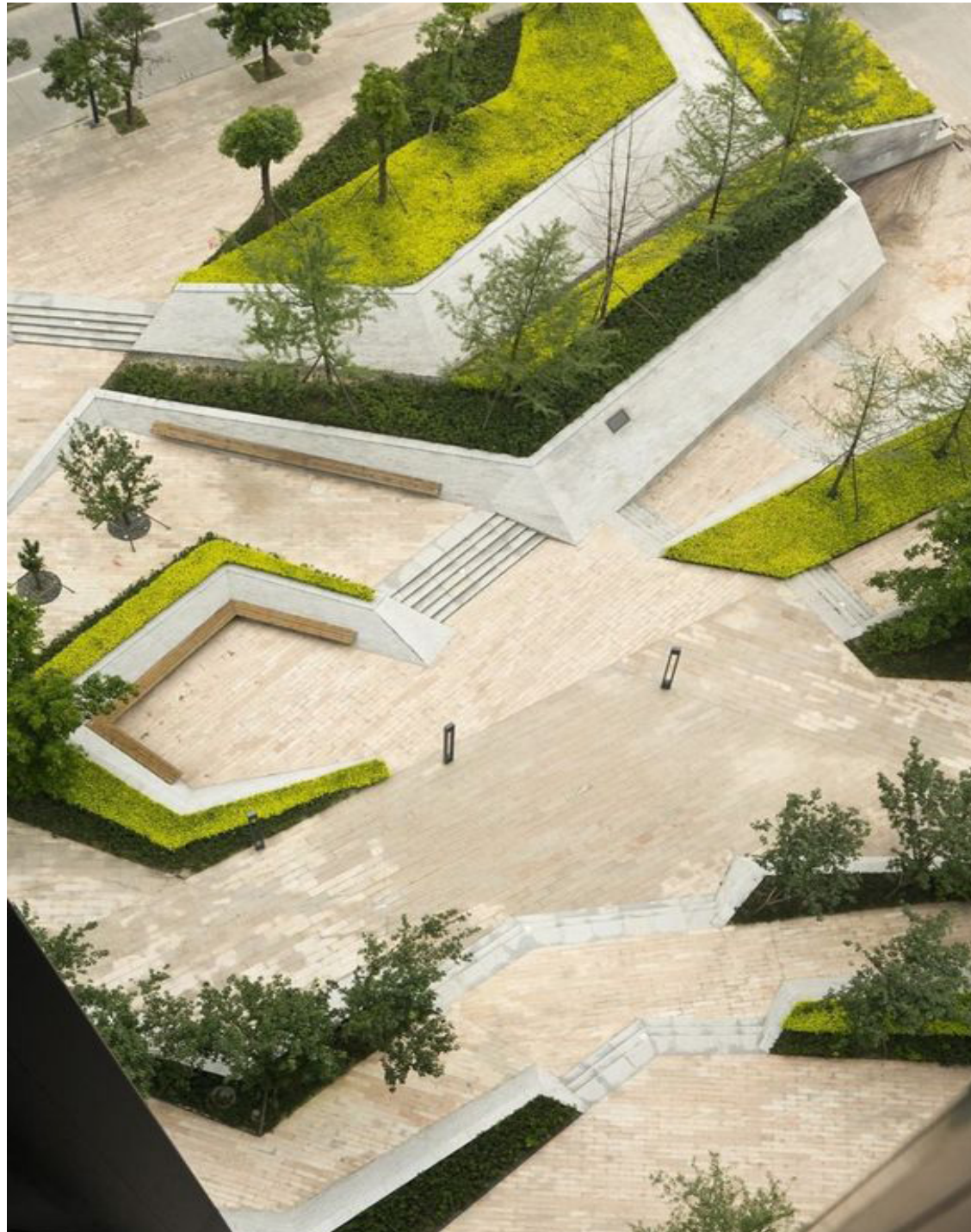
Re-use existing pots and planting where possible as incidental focal points strategically placed for maximum impact

Allow for planting rotation to pots - living colour displays



# PRECEDENTS

---





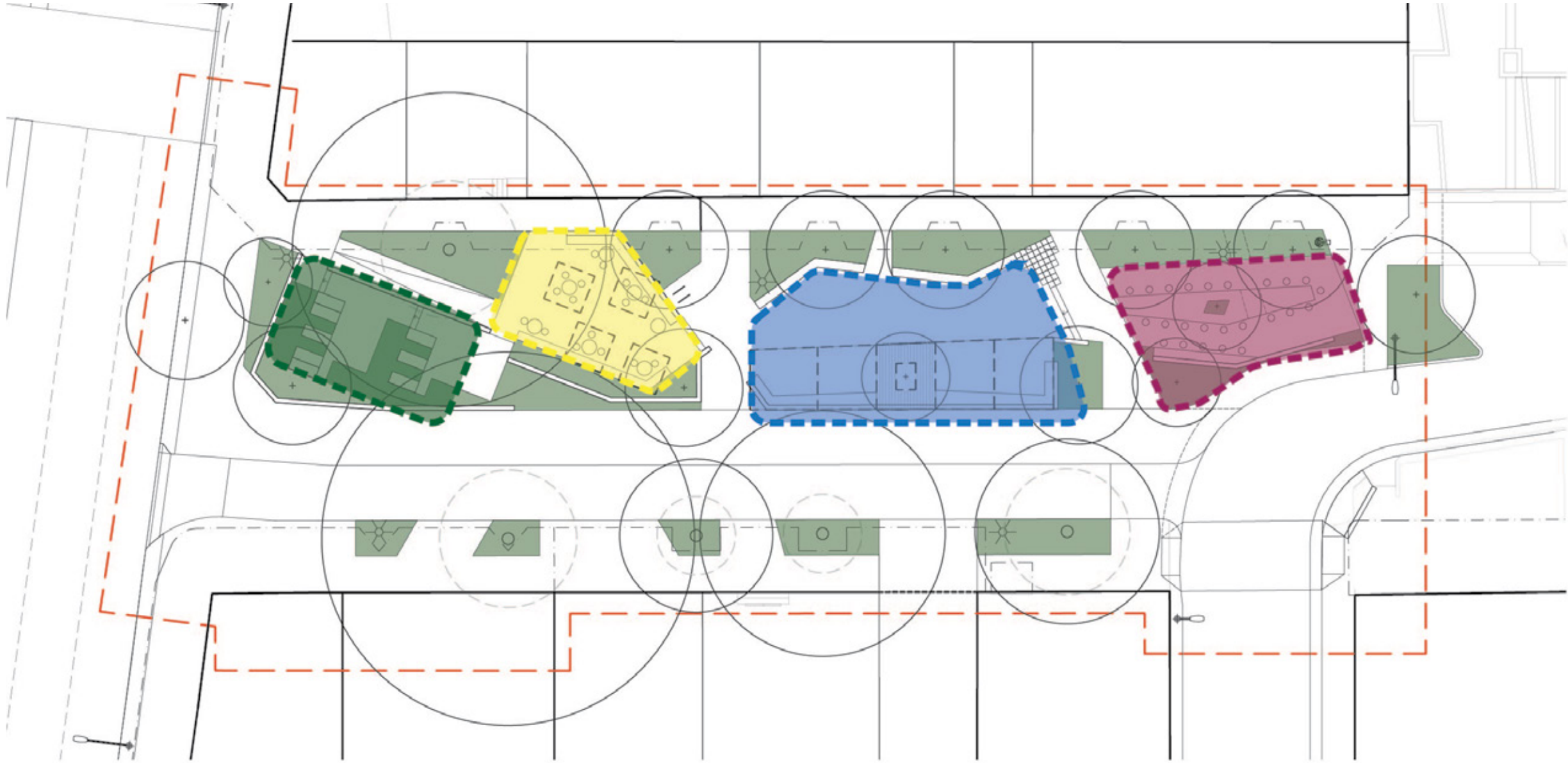
# PRECEDENTS PLAY





---





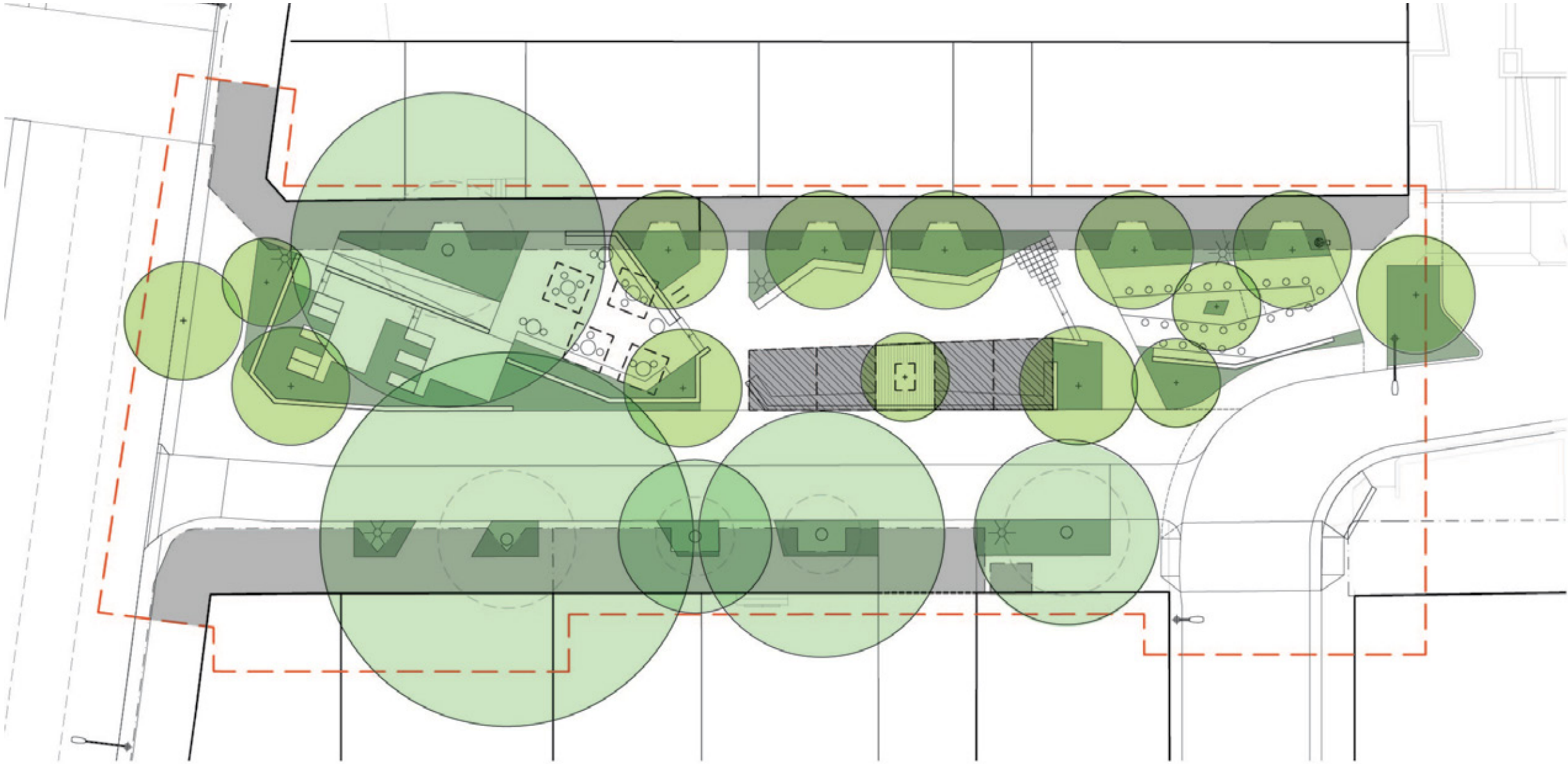
# ACTIVATION







-  LOUNGING ZONE
-  CAFE ZONE
-  URBAN PLAY ZONE + LOUNGING ZONE
-  COMMUNAL DINING



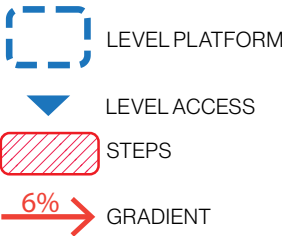
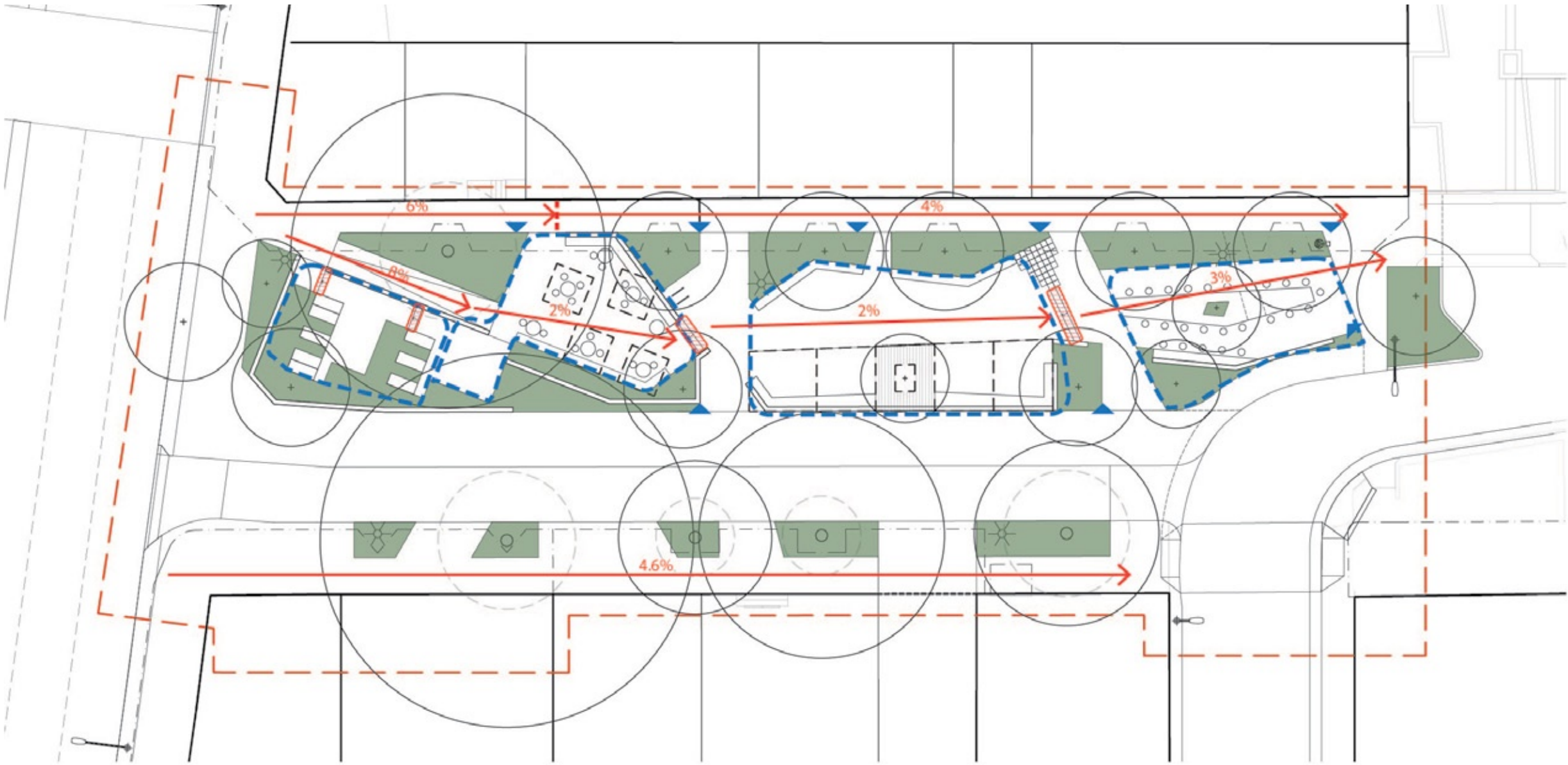
# SHELTER AND CANOPY COVER



-  EXISTING TREE CANOPY
-  PROPOSED TREE CANOPY
-  EXISTING AWNING
-  PROPOSED ALL-WEATHER SHELTER

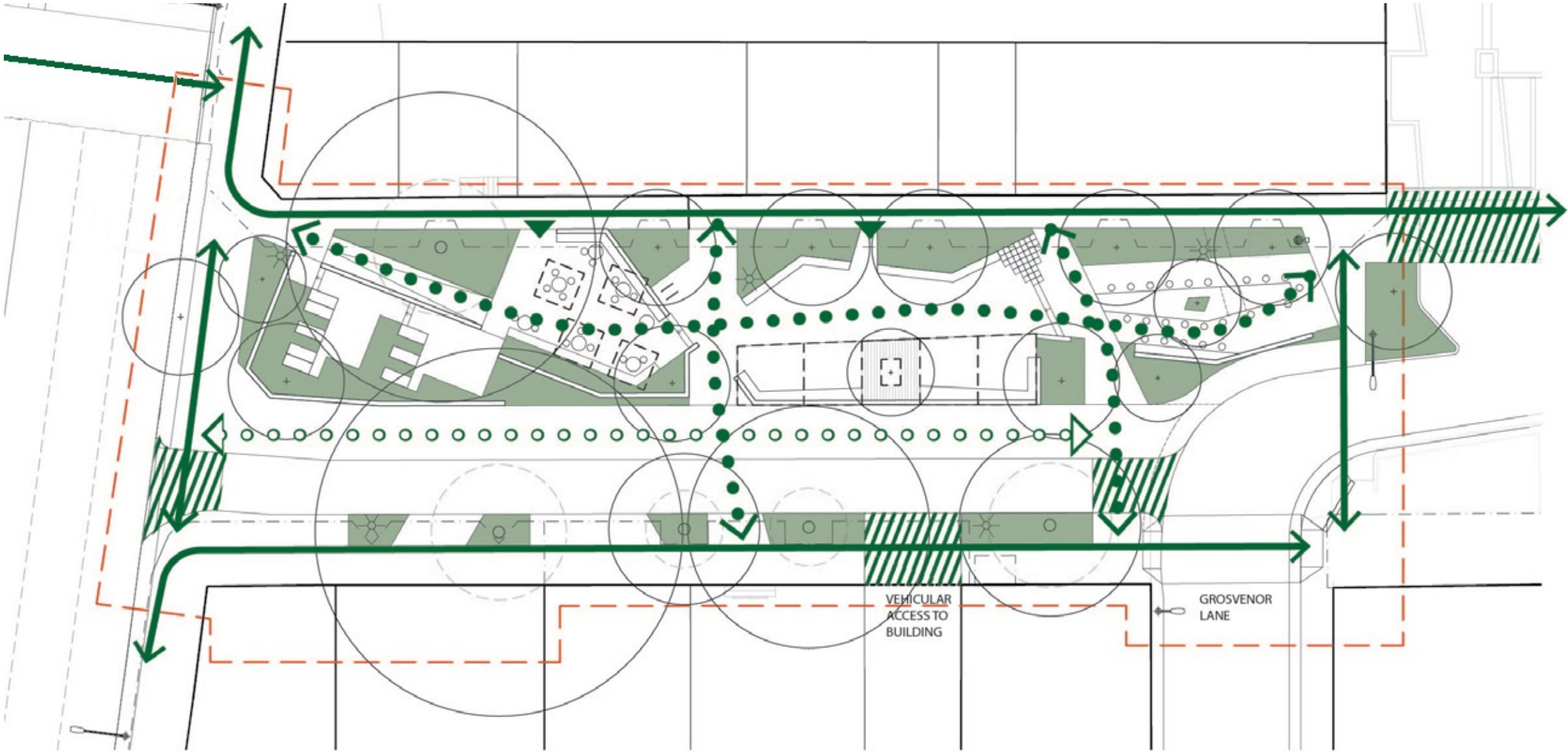


# LEVELS AND GRADING





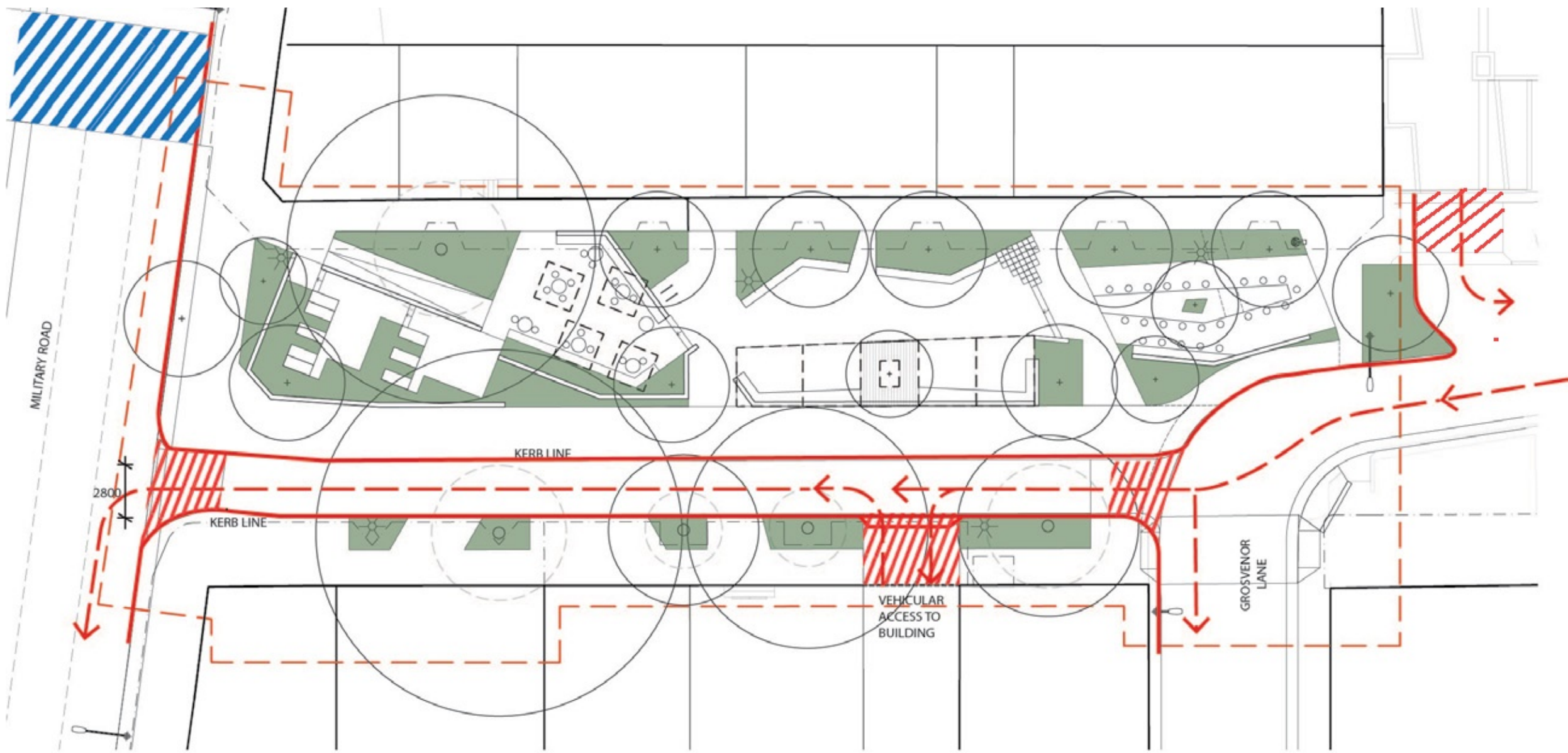
# PEDESTRIAN MOVEMENTS



- PRIMARY PEDESTRIAN MOVEMENT
- SECONDARY PEDESTRIAN MOVEMENT
- TEMPORARY PEDESTRIAN PATHWAY
- RAISED THRESHOLD TREATMENT
- AT - GRADE PEDESTRIAN CROSSING



# VEHICULAR MOVEMENTS



- PROPOSED KERB LINE
- VEHICULAR MOVEMENT
- RAISED THRESHOLD TREATMENT
- SIGNALISED CROSSING



# SWEPT PATHS

